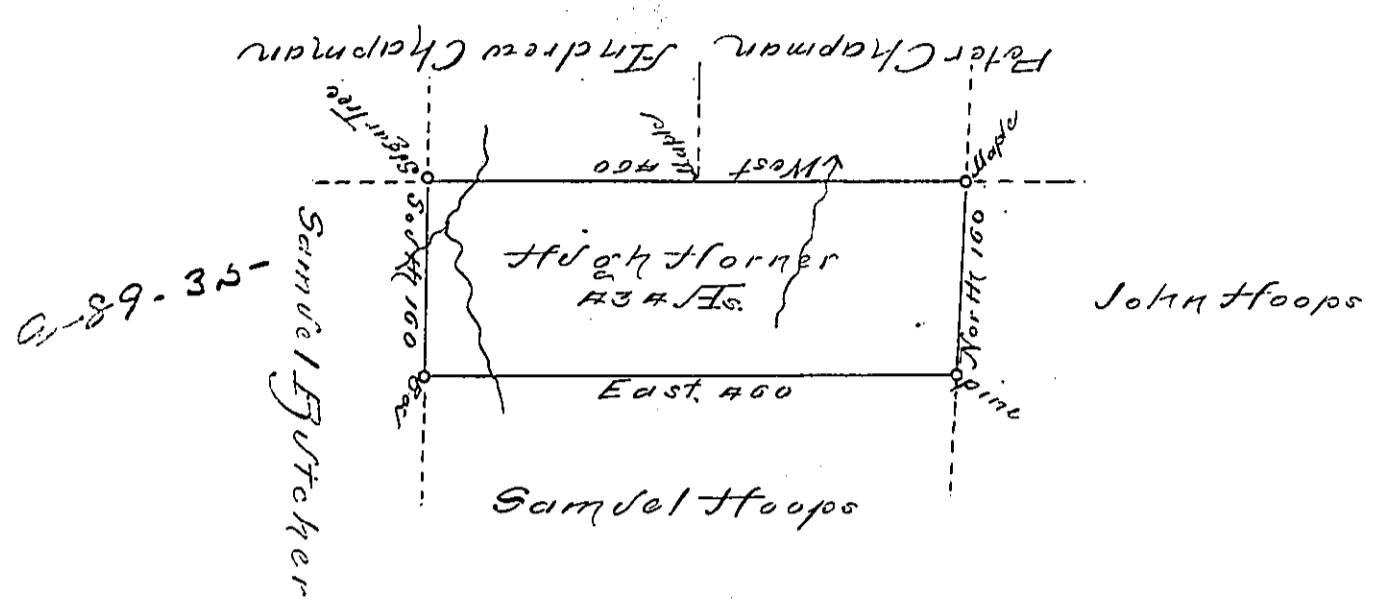


812 118



Situate on the Waters of Branch Creek in Bald Eagle Township Mifflin County

Surveyed on the 24 Day of June 1793 for George Horner by Virtue of his Warrant bearing date on the 18th Day of Decem^r 1793 Containing four hundred thirty four Acres & the usual Allowance

Taken from the field Notes of Joseph J. Wallis late Deputy Surveyor

To Daniel Brodhead Esq. } by Henry Conrad Esq.
 Surveyor General

IN TESTIMONY that the above is a copy of the original remaining on file in the Department of Internal Affairs of Pennsylvania, made conformably to an Act of Assembly approved the 16th day of February, 1833, I have hereunto set my Hand and caused the Seal of said Department to be affixed at Harrisburg, this

thirtieth day of March 1894.

Geo. A. Stewart
 Secretary of Internal Affairs.